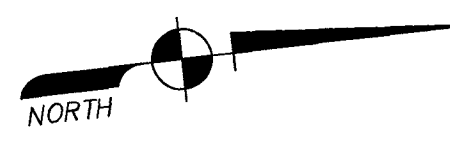
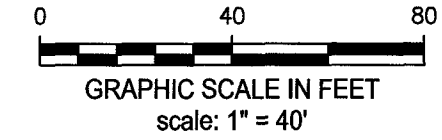
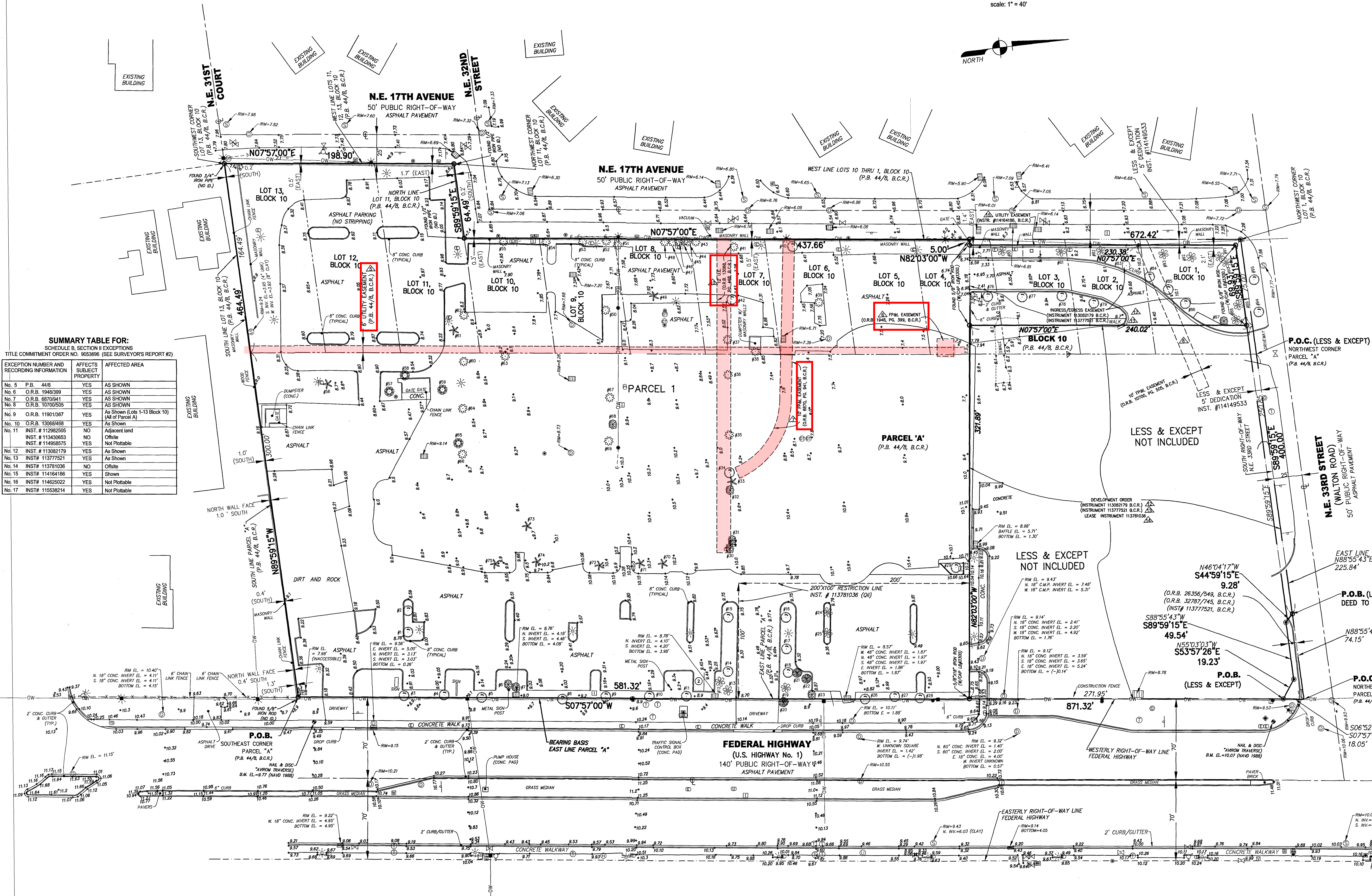


# ALTA / NSPS SURVEY



LEGEND	
	BACK FLOW PREVENTOR VALVE
	CABLE TELEVISION RISER
	CATCH BASIN
	CLEAN OUT
	CONCRETE LIGHT POLE
	CONCRETE UTILITY POLE
	CONCRETE UTILITY POLE WITH LIGHT
	CROSSWALK SIGNAL POLE
	CURB INLET
	DOUBLE DETECTOR CHECK VALVE
	DRAINAGE MANHOLE
	ELECTRIC RISER
	ELECTRIC SERVICE BOX
	FIRE HYDRANT
	GAS METER
	GREASE TRAP
	GUY ANCHOR
	IRRIGATION CONTROL BOX
	METAL LIGHT POLE
	SIAMSE CONNECTION SIGN
	TELEPHONE MANHOLE
	TRAFFIC LIGHT SUPPORT POLE
	TREE NUMBER
	UNDERGROUND GAS MARKER
	UNKNOWN UTILITY SERVICE BOX
	VAULT
	WATER METER
	WATER VALVE
	WOOD UTILITY POLE
	WOOD UTILITY POLE WITH LIGHT
	YARD DRAIN
	EXCEPTION NUMBER (TYPICAL)

SUMMARY TABLE FOR: SCHEDULE B, SECTION II EXCEPTIONS TITLE COMMITMENT ORDER NO. 9053696 (SEE SURVEYOR'S REPORT #2)		
EXCEPTION NUMBER AND RECORDING INFORMATION	AFFECTS SUBJECT PROPERTY	AFFECTED AREA
No. 5 P.B. 44/8	YES	AS SHOWN
No. 6 O.R.B. 1948399	YES	AS SHOWN
No. 7 O.R.B. 6870941	YES	AS SHOWN
No. 8 O.R.B. 1070055	YES	AS SHOWN
No. 9 O.R.B. 11901367	YES	As Shown (Lots 1-13 Block 10) (All of Parcel A)
No. 10 O.R.B. 13068468	YES	As Shown
No. 11 INST. # 112982505 INST. # 113430653 INST. # 114955375	NO	Adjacent land Offsite
No. 12 INST. # 113082179	YES	As Shown
No. 13 INST. # 11377521	YES	As Shown
No. 14 INST. # 113781036	NO	Offsite
No. 15 INST. # 114164186	YES	Shown
No. 16 INST. # 114625022	YES	Not Plottable
No. 17 INST. # 115538214	YES	Not Plottable



**NOTE**  
ELEVATIONS SHOWN HEREON  
ARE BASED ON THE NORTH  
AMERICAN VERTICAL DATUM OF 1988  
(NAVD 88)

**AVIROM & ASSOCIATES, INC.**  
SURVEYING & MAPPING  
90 S.W. 2nd Avenue, Suite 102  
Boca Raton, Florida 33432  
(561) 392-2554 / www.aviromsurvey.com  
©2021 AVIROM & ASSOCIATES, INC. All rights reserved.  
This drawing is the property of AVIROM & ASSOCIATES, INC. and should not be reproduced or copied without written permission.

REVISIONS	DATE	BY	CHKD	REVISIONS	DATE	BY	CHKD
UPDATE SURVEY DATA & TREE	07/12/2021	C.M.	A.T.D.				
FIELD UPDATE BOUNDARY & REUSE PER COMMITMENT	08/17/2021	W.R.L.	A.T.D.				
REVISE PER COMMENTS	07/09/2021	J.T.D.	A.T.D.				
LOCATE & SETBACK EL'S & TREES IN MULTIPLE PARCELS	04/09/2021	A.T.S.	A.T.D.				

**ALTA/NSPS LAND TITLE SURVEY**  
**PORTION OF PARCEL "A" & BLOCK 10**  
CRESTHAVEN NO. 8  
(P.B. 44, PG. 8, B.C.R.)  
POMPANO BEACH  
BROWARD COUNTY, FLORIDA

1" = 40'

DATE: 07/13/2021

BY: W.R.L.

CHECKED: J.T.D.

F.B. 1683 PG. 5-24

SHEET: 2 OF 2

NOT VALID WITHOUT  
SHEETS 1 AND 2

2720 06000003

10/27/21

P&Z

9/22/21